



Agenda Item Report

Joint City Commission - County Commission Meeting - May 15 2023

Department

Fire Medical

Staff Contact

Kevin Joles, McKenzi Ezell, Richard Llewellyn,

Recommendations

Receive LDCFM presentation on Fire Medical recommended deployment changes including expansion opportunities.

Executive Summary

LDCFM has been monitoring its response data in light of the community's continuing growth and identified a need for an expansion of the department's operational footprint and response capabilities to meet deployment objectives. These service gaps have been identified through the Insurance Services Office (ISO) and the Center for Public Safety Excellence (CPSE) Accreditation process looking at quality standard practices.

The department has not expanded within the city of Lawrence since 2006. Since that time, LDCFM call volumes have grown from 8,964 annually in 2006, to 15,579 annually in 2022. Additionally, the city's footprint has expanded over the same time period and is more than likely to see continued growth in certain areas. These factors have a combined impact LDCFM's ability to provide a timely response in certain areas within the city of Lawrence in addition to the given number of times the closest stations resources are already dedicated to other incidents, this growth is impacting the ability to provide emergency medical services in Douglas County.

The 2020 Station Optimization Analysis of this issue provided a couple of options that the LDCFM should consider including the movement of a single station or the movement of a single station in conjunction with the construction of two expansion stations.

This presentation will examine the underlying data and provide opportunities for members of the City and County Commissions to jointly discuss the future of fire and EMS delivery within Douglas County.

Alignment to Strategic Plan

Safe and Secure

Fiscal Impact

The request is that these expenses will be paid for by additional property taxes. Projected Mill levy impacts will be presented verbally.

Option 1: LDCFM Expansion (2 Expansion Stations & Single Relocation Station)

One-Time Expenses: \$52.5 Million
City of Lawrence: \$34,400,000
Douglas County: \$18,100,000
Ongoing Annual Expenses: \$6.8 Million
City of Lawrence: \$4,352,000
Douglas County: \$2,448,000

Option 2: LDCFM Deployment Reconfiguration (Single Station Relocation)

One-Time Expenses: \$15.5 Million
City of Lawrence: \$9,920,000
Douglas County: \$5,580,000

Action Requested

Consider LDCFM presentation on Fire Medical recommended deployment changes including expansion opportunities.

Previous Agenda Reports:

N/A

Attachments

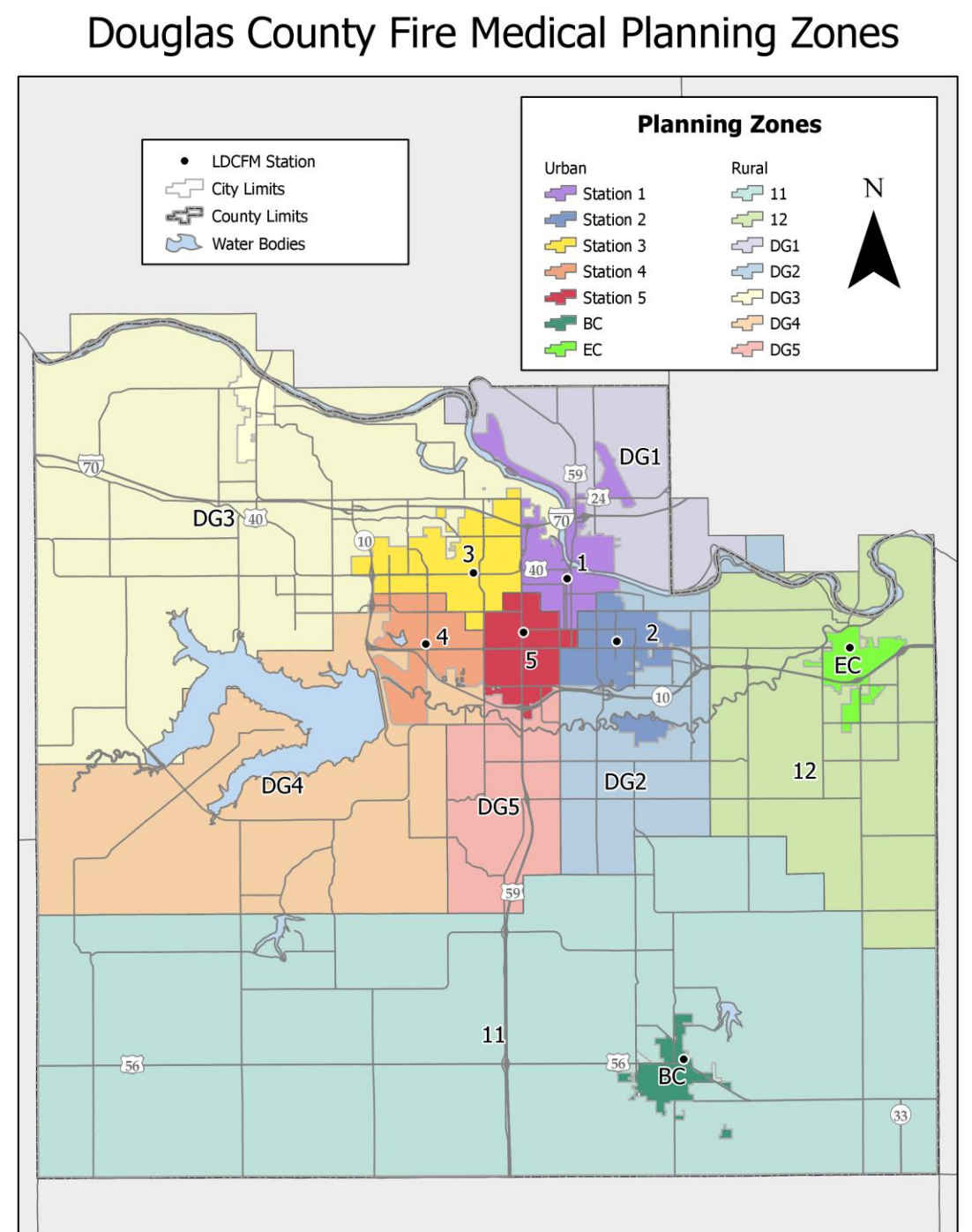
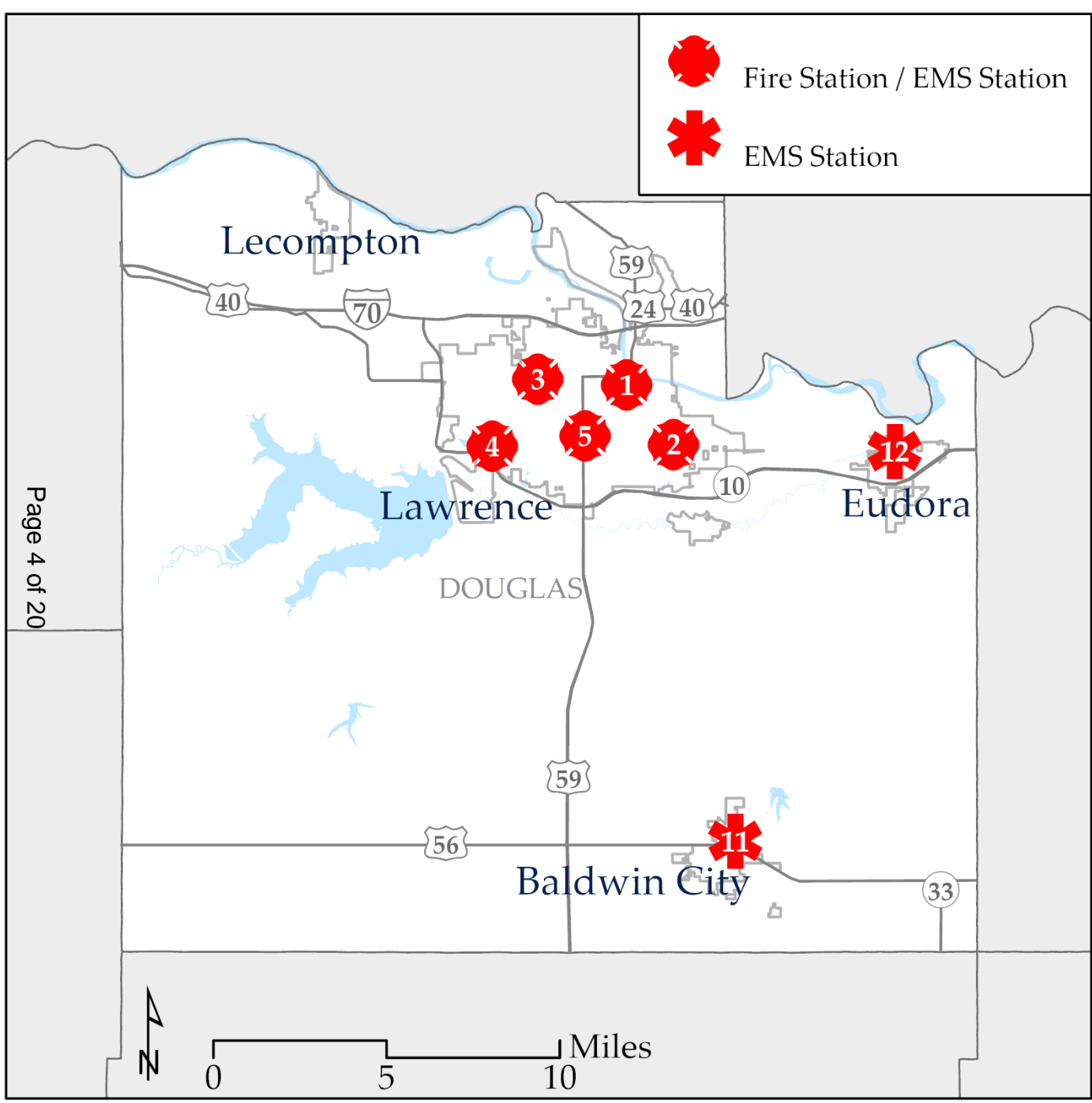
[2023 City County Joint Presentation - LDCFM Expansion \(3\)](#)



Lawrence- Douglas County Fire Medical Expansion Project

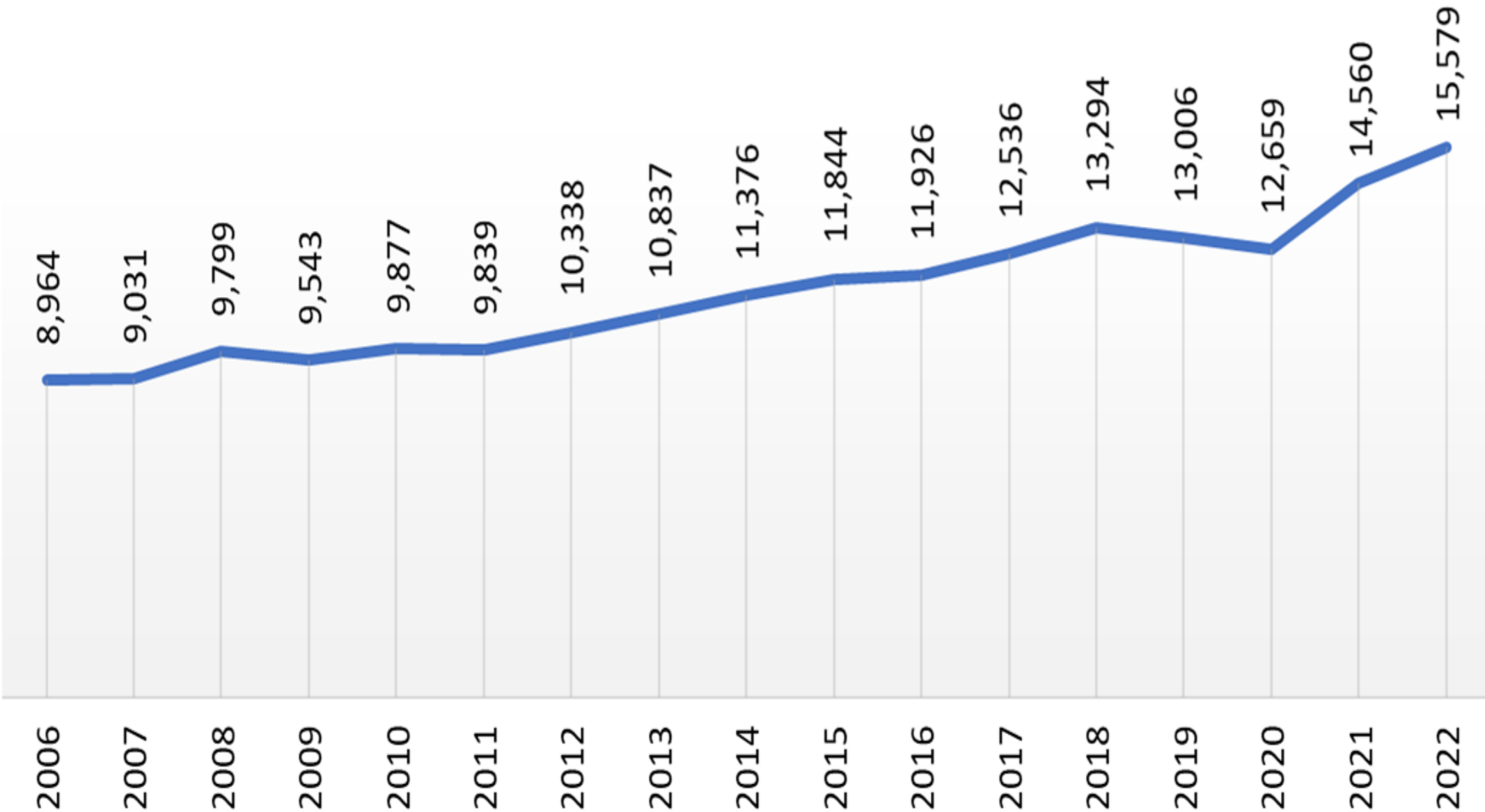
City of Lawrence and Douglas County
Joint Commission Presentation
May 15th, 2023

Rich Llewellyn, Fire Chief
Kevin Joles, Division Chief of EMS
McKenzi Ezell, Fire Medical Analyst



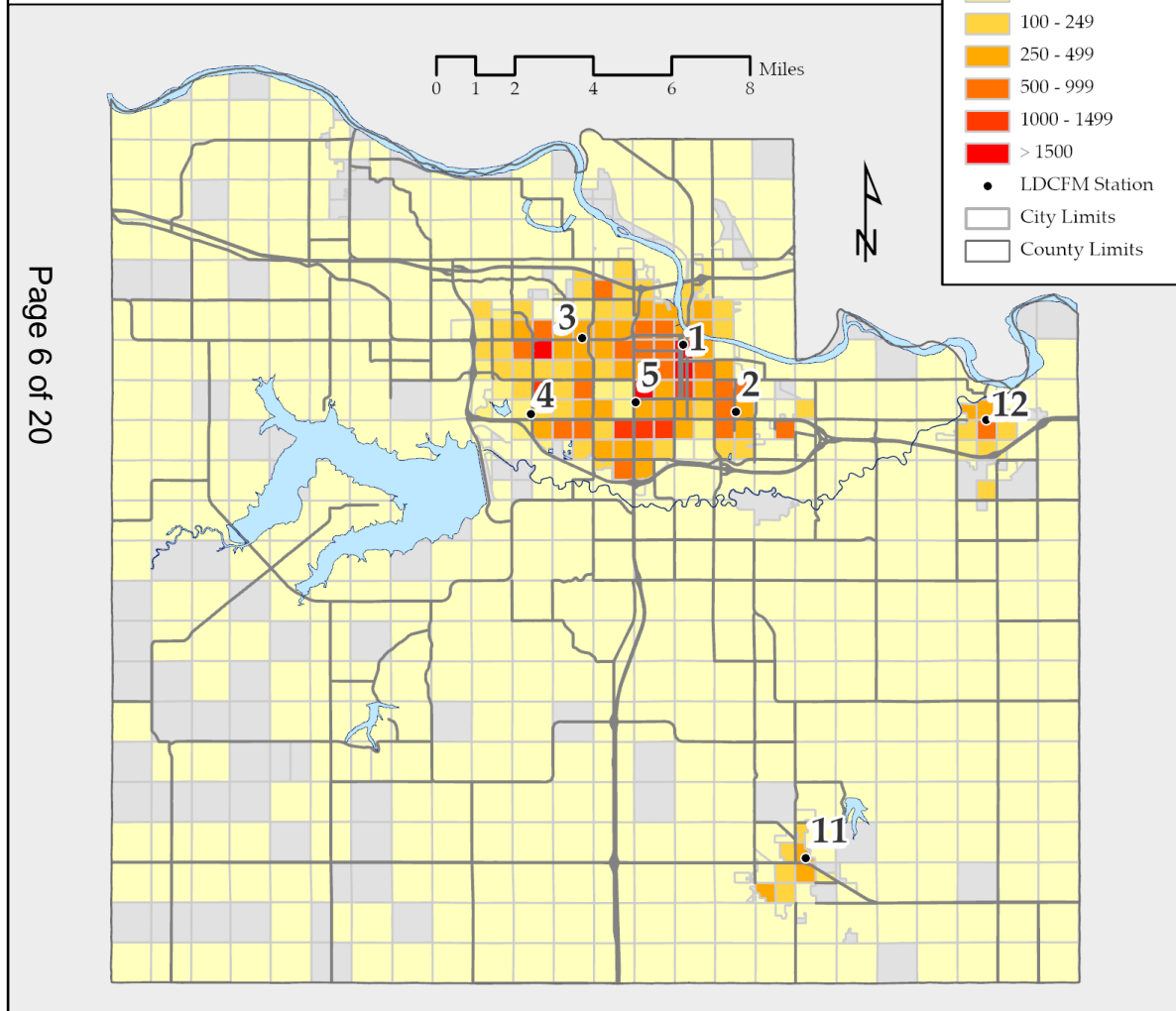
Total Incident Count

18,000
16,000
14,000
12,000
10,000
8,000
6,000
4,000
2,000
0



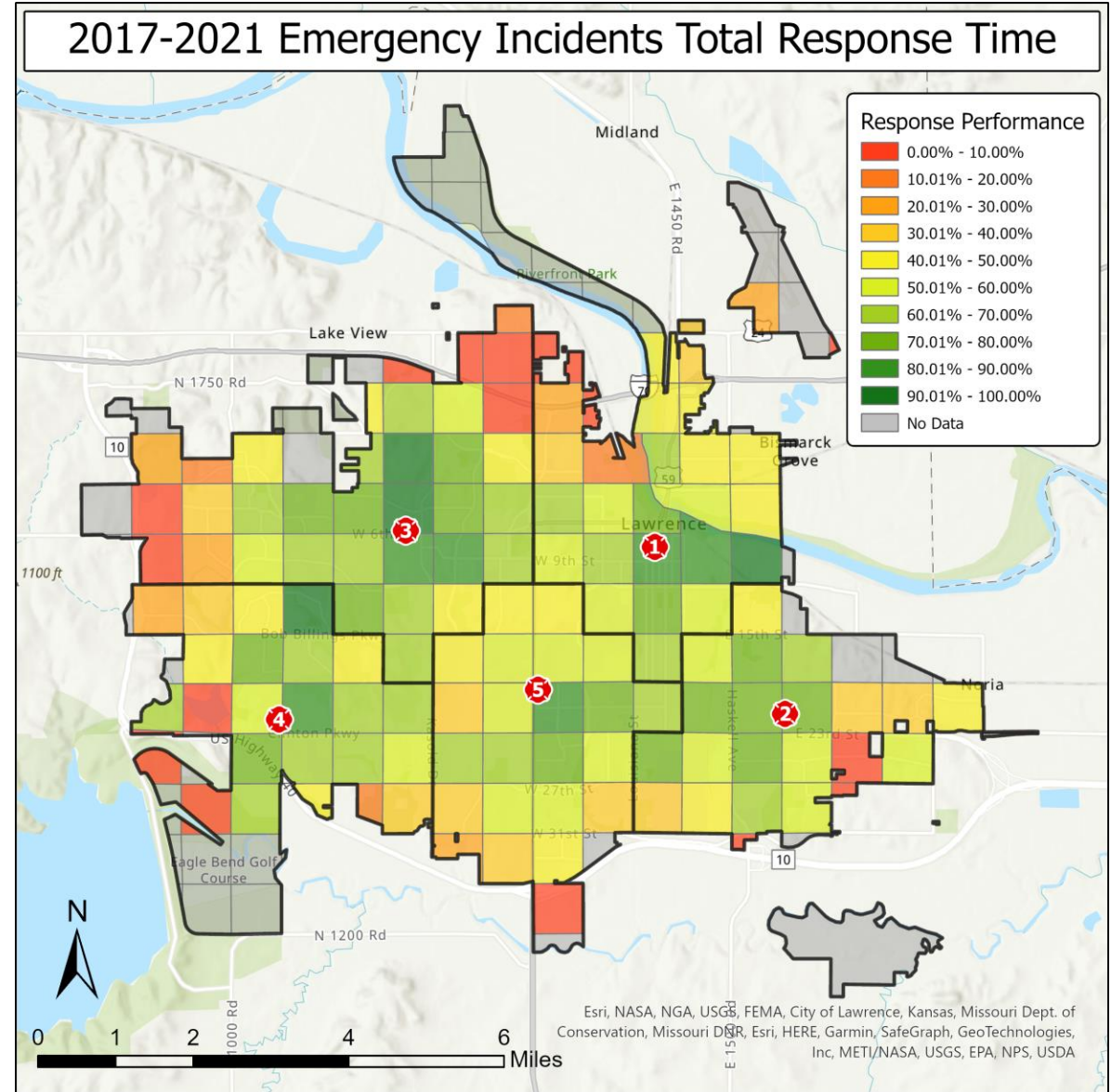
Incident Dispersion and Emergency Performance

All Incidents Count by Grid 2017-2021

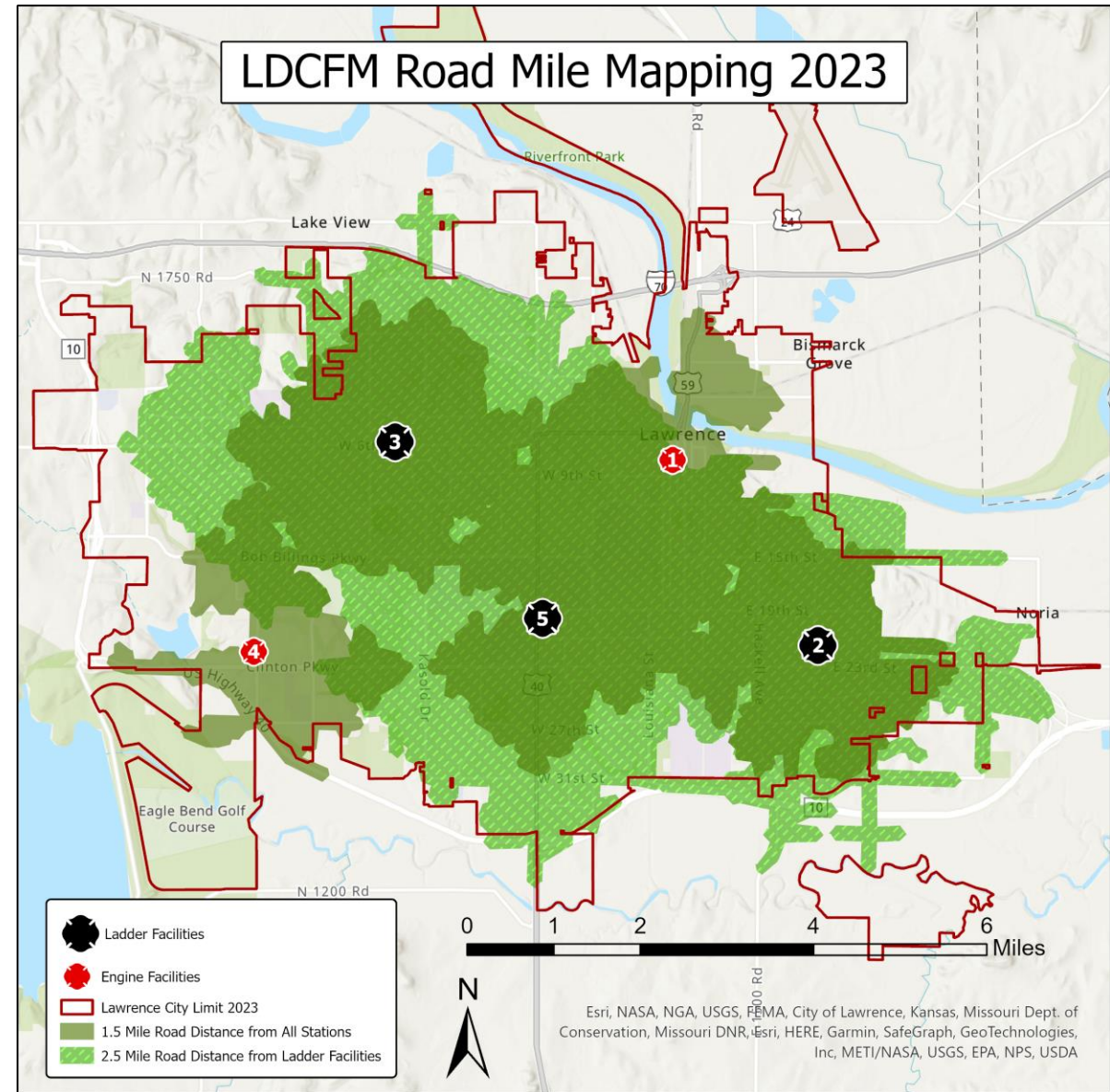
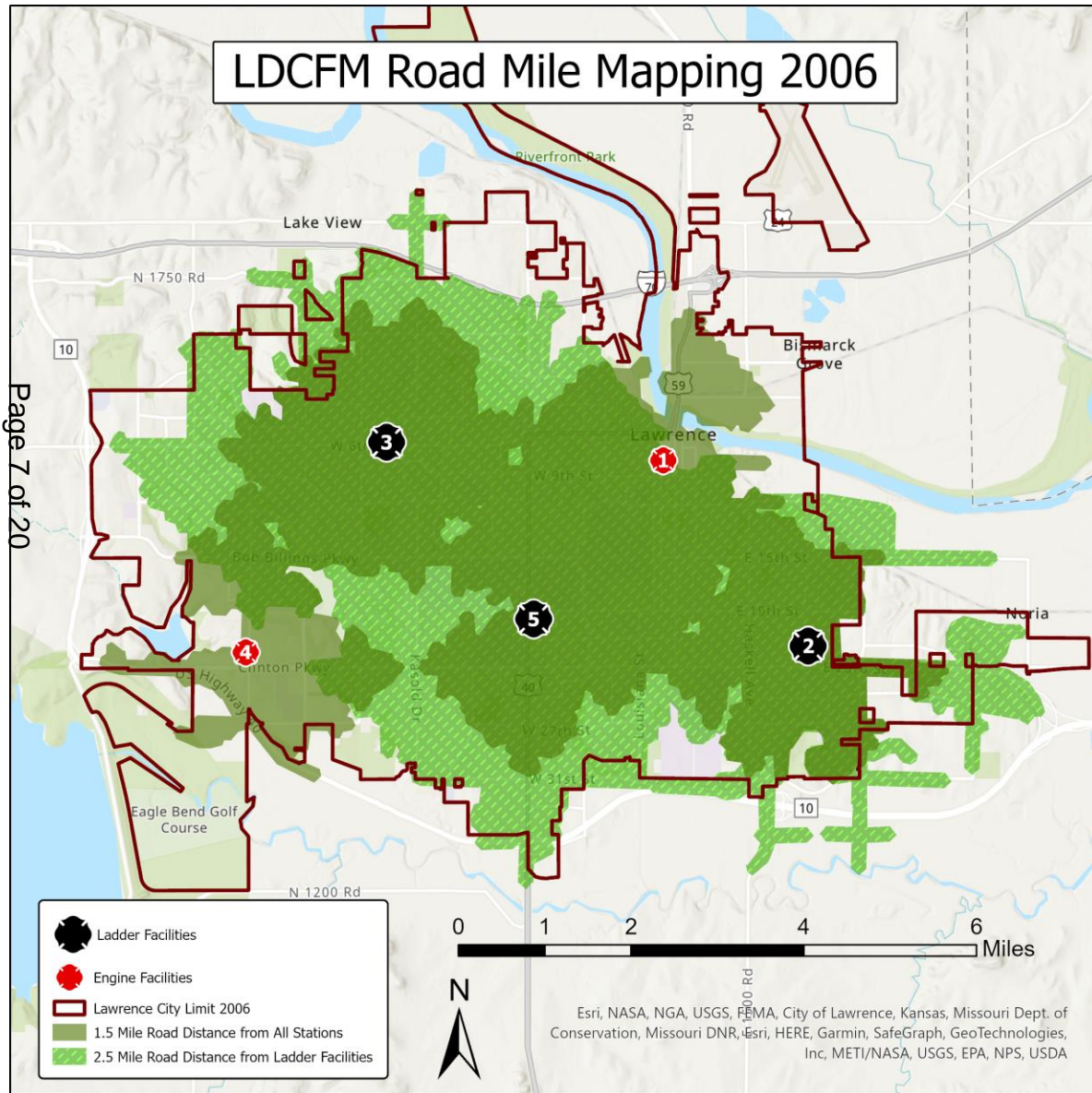


Page 6 of 20

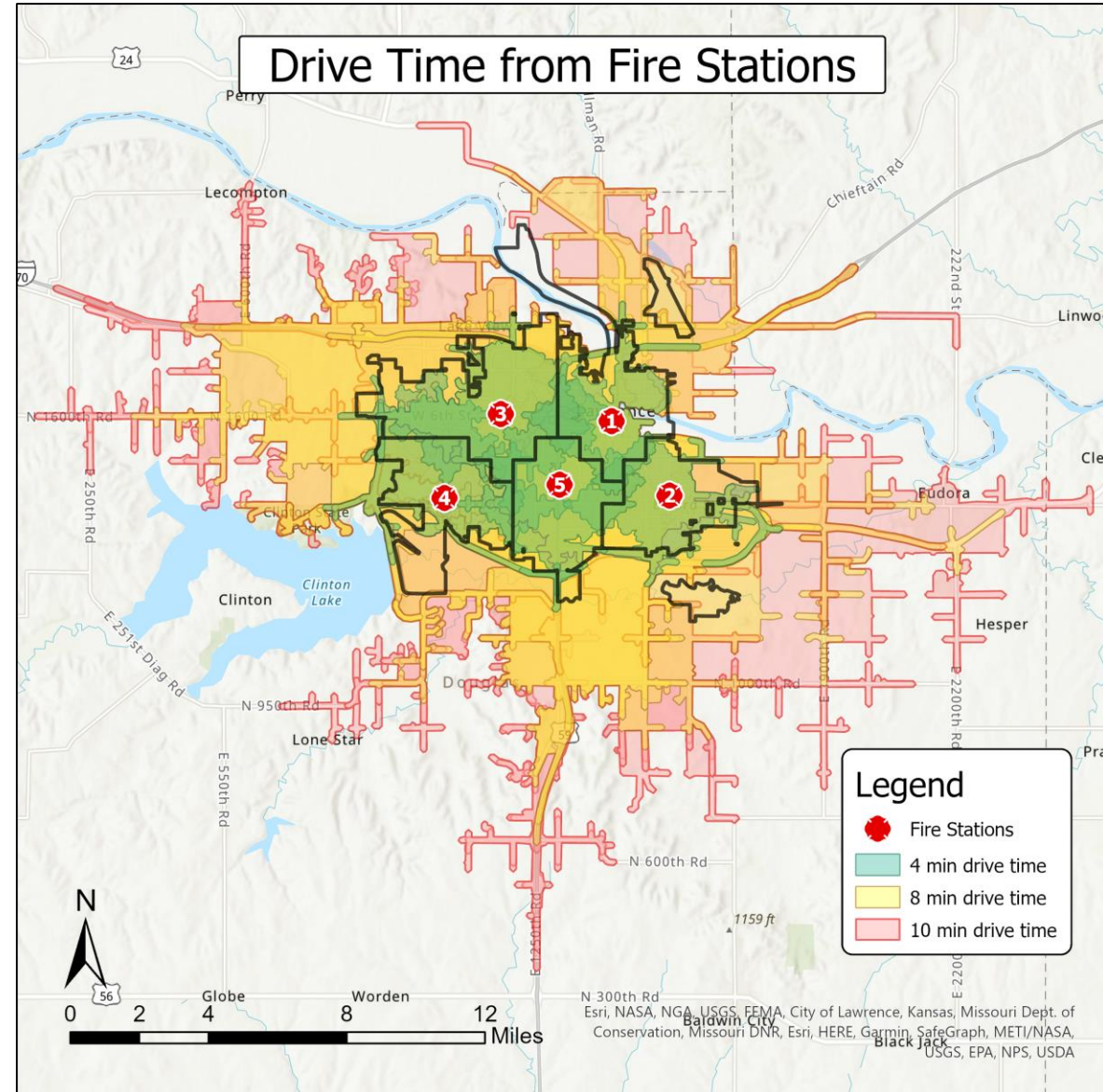
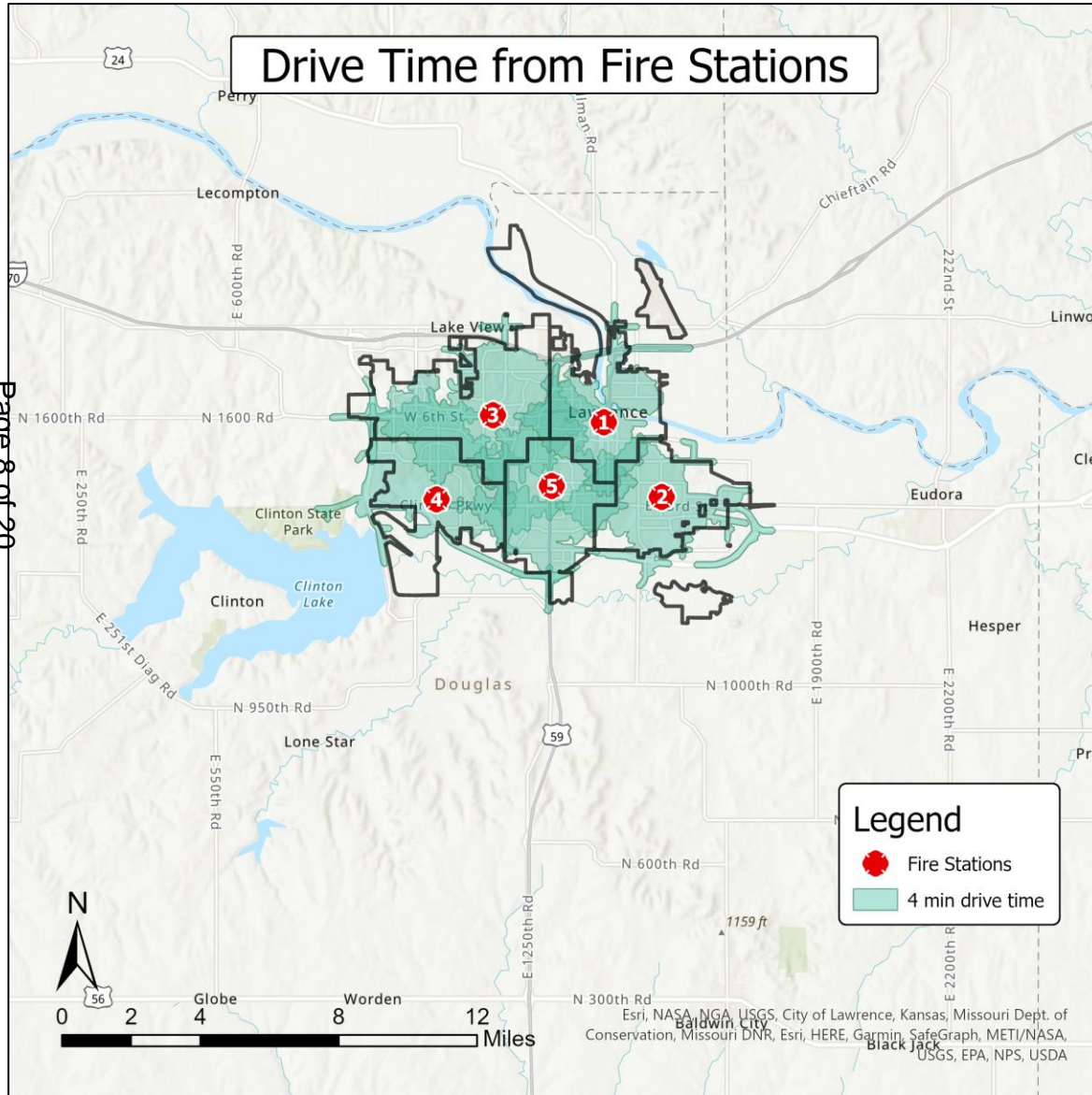
2017-2021 Emergency Incidents Total Response Time



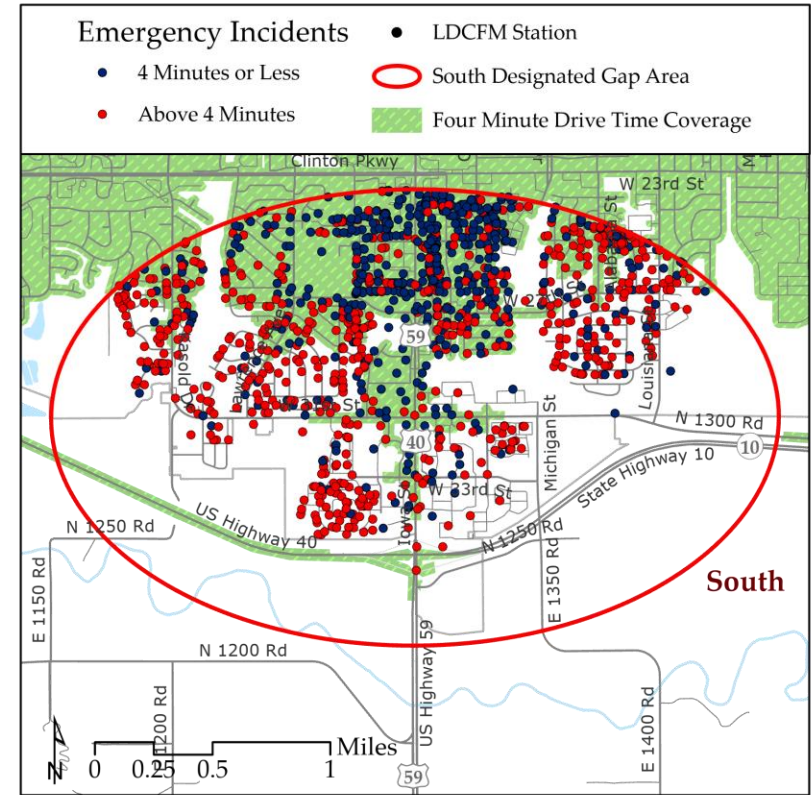
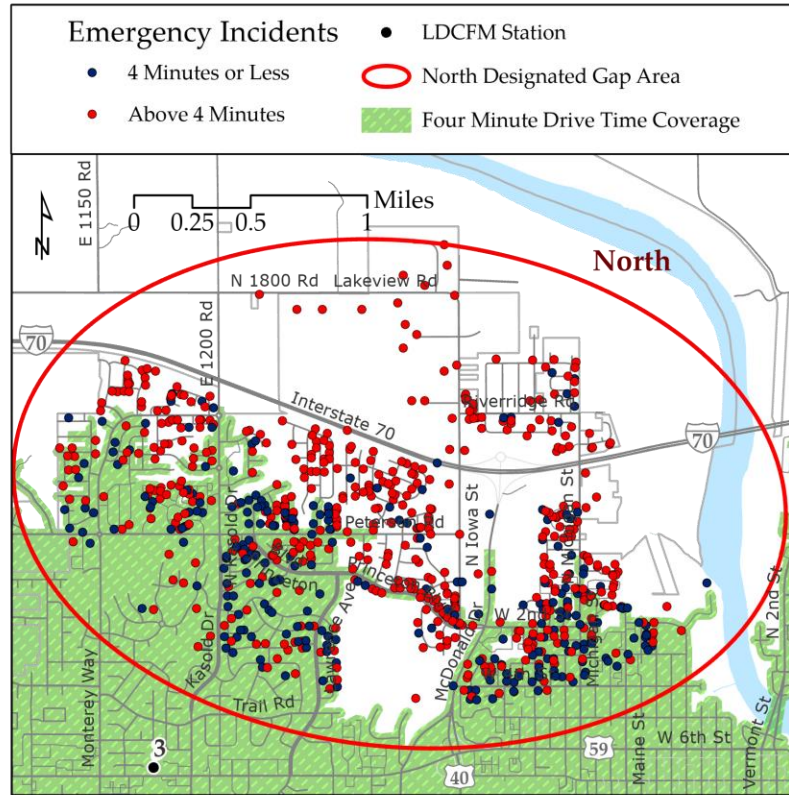
Road Mile Mapping 2006 vs. 2023



Travel Time Analysis



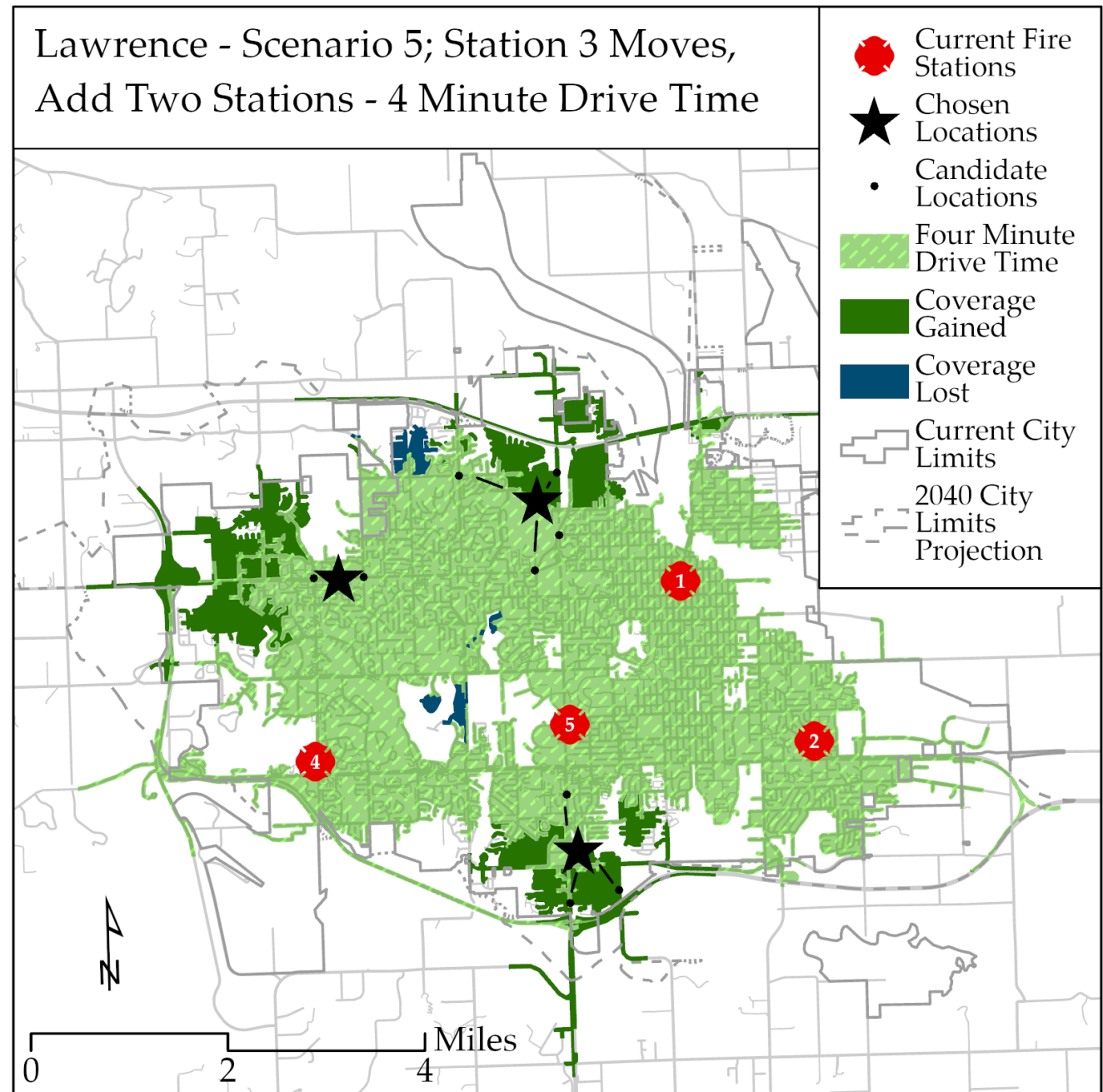
Identified Gap Areas



Request / Discussion Topic

2 Expansion Stations and 1 Relocation Station

- West Station Expansion
- South Station Expansion
- Station 3 Relocation (North Central)



Station Expansion Cost (per Station)

One-Time Expansion Station Cost: \$18.5 Million

(City of Lawrence: \$34.4 Million, Douglas County: \$18.1 Million)

- **Land:** \$1 Million
- **Design:** \$500,000
- **Build:** \$14 Million
- **Apparatus (Medic Unit & Fire Truck):** \$2.5 Million
- **Equipment:** \$500,000

Ongoing Annual Expenses: \$3.4 Million

(City of Lawrence: \$4.4 Million, Douglas County: \$2.4 Million)

- **Personnel:** \$3.3 Million
- **Station Operating Expenses:** \$65,000

Station Relocation Cost (per station)

One-Time Relocation Station Cost: \$15.5 Million

(City of Lawrence: \$9.9 Million, Douglas County: \$5.5 Million)

- **Land:** \$1 Million
- **Design:** \$500,000
- **Build:** \$14 Million

Policy Question

Option 1: LDCFM Expansion (2 Expansion Stations & Single Relocation Station)

- One-Time Cost: **\$52.5 Million** (City of Lawrence: \$34.4 Million, Douglas County: \$18.1 Million)
- Ongoing Annual Cost: **\$6.8 Million** (City of Lawrence: \$4.4 Million, Douglas County: \$2.4 Million)

Option 2: LDCFM Deployment Reconfiguration (Single Station Relocation)

- One-Time Cost: **\$15.5 Million** (City of Lawrence: \$9.9 Million, Douglas County: \$5.5 Million)
- Ongoing Annual Cost: **\$0**

Option 3: Should LDCFM's expansion go on the ballot in November?

- If so, the following need to be included for cost
 - Education Campaign
 - Staff Time
- The City Commission would have to pass a resolution in a public meeting ahead of submitting ballot language to the County Clerk. Ballot language would have to be received by the County Clerk no later than September 1st.

Leawood, KS \$7M



Olathe, KS \$14M



Shawnee, KS \$17.9M



Shawnee, KS \$8.3M



Colorado Springs, CO



South Metro, Lake Winnebago, MO \$5.2M



What's Next?

- Update 2020 Station Optimization Analysis
- Lead Gold vs. Platinum
- Cost Share Agreement



Appendix Items

Call Type Distribution

Call Type Examples

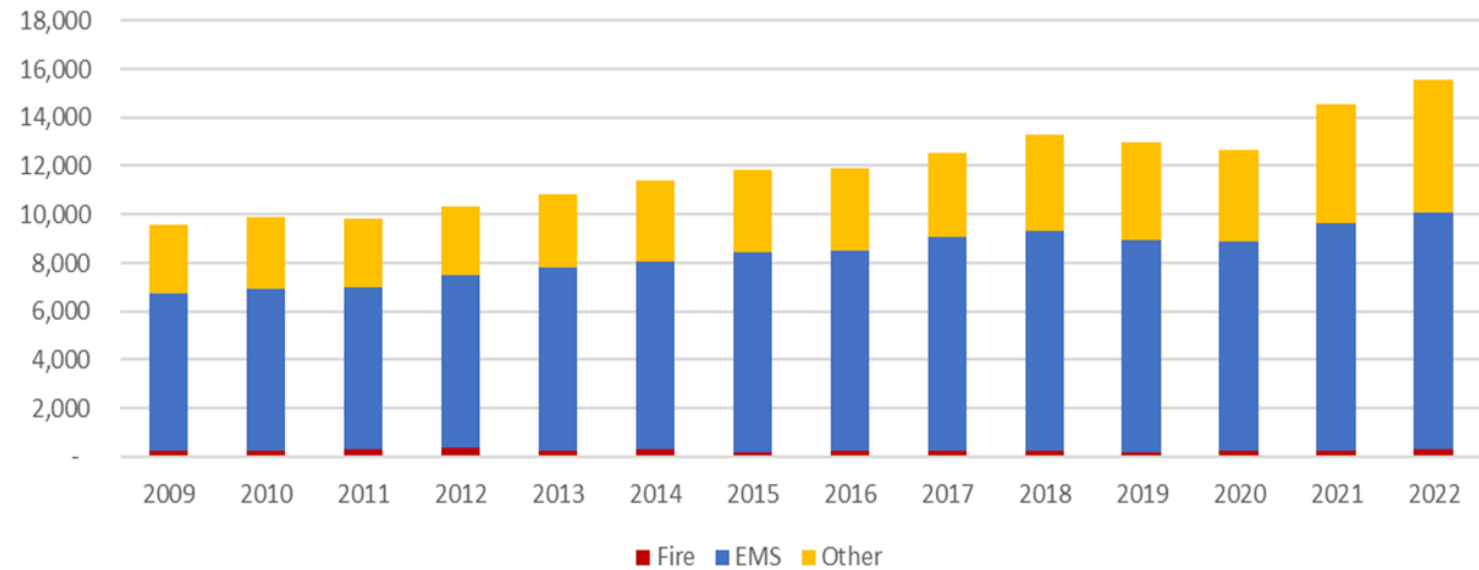
Fire Calls: Trash fire, vehicle fire, building fire, cooking fire, natural vegetation fire, storage fire, crop fire, etc.

EMS Calls: Cardiac arrest, choking, diabetic, motor vehicle accident, confined space rescue, water rescue, electrocution, medical standbys (special events), etc.

Other Calls: Attempted burning, unauthorized burning, lift assist, steam rupture, chemical reaction, explosion, gas leak, overheated motor, power line down, person in distress, elevator rescue, controlled burning, false alarm, medical panic alarm, system malfunction, etc.

Year	Total	Fire		EMS		Other	
2009	9,543	254	3%	6,484	68%	2,805	29%
2010	9,877	257	3%	6,680	68%	2,940	30%
2011	9,839	297	3%	6,681	68%	2,861	29%
2012	10,338	347	3%	7,130	69%	2,861	28%
2013	10,837	255	2%	7,584	70%	2,998	28%
2014	11,376	283	2%	7,800	69%	3,293	29%
2015	11,844	211	2%	8,229	69%	3,404	29%
2016	11,926	254	2%	8,246	69%	3,426	29%
2017	12,536	238	2%	8,802	70%	3,496	28%
2018	13,294	243	2%	9,089	68%	3,962	30%
2019	13,006	191	1%	8,781	68%	4,034	31%
2020	12,659	242	2%	8,624	68%	3,793	30%
2021	14,560	259	2%	9,380	64%	4,921	34%
2022	15,579	308	2%	9,792	67%	5,479	38%

Call Type Distribution



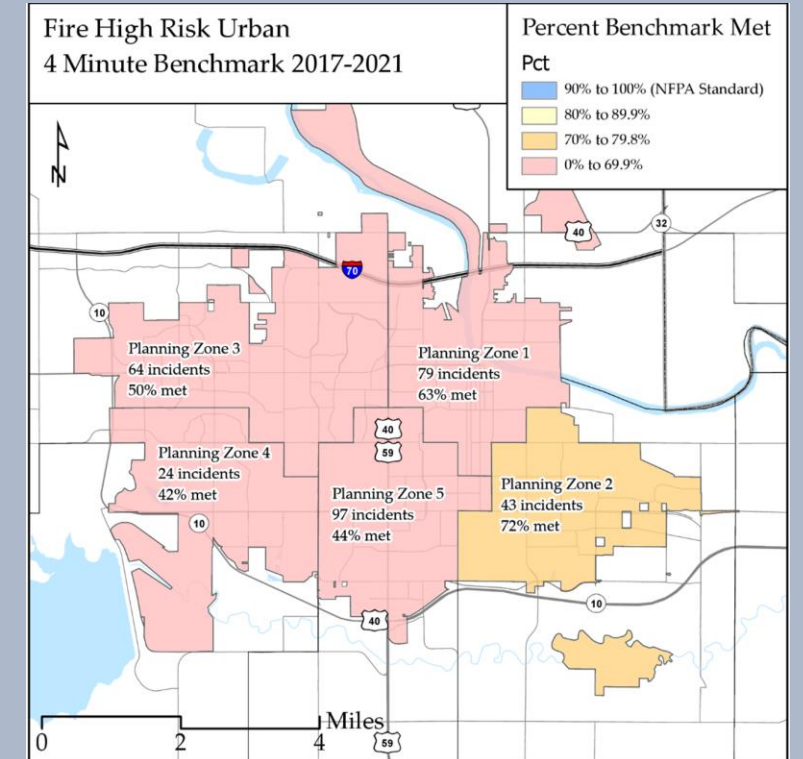
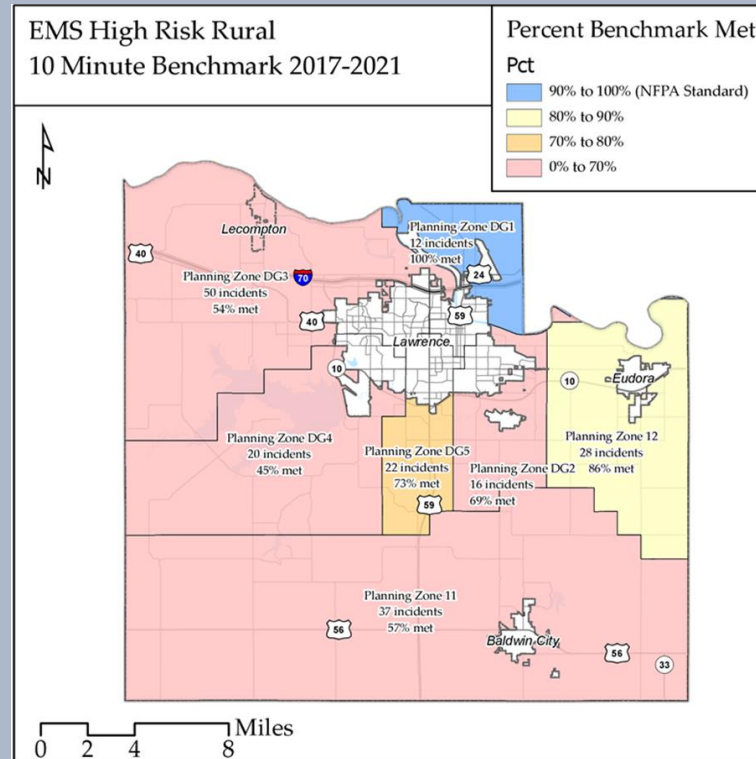
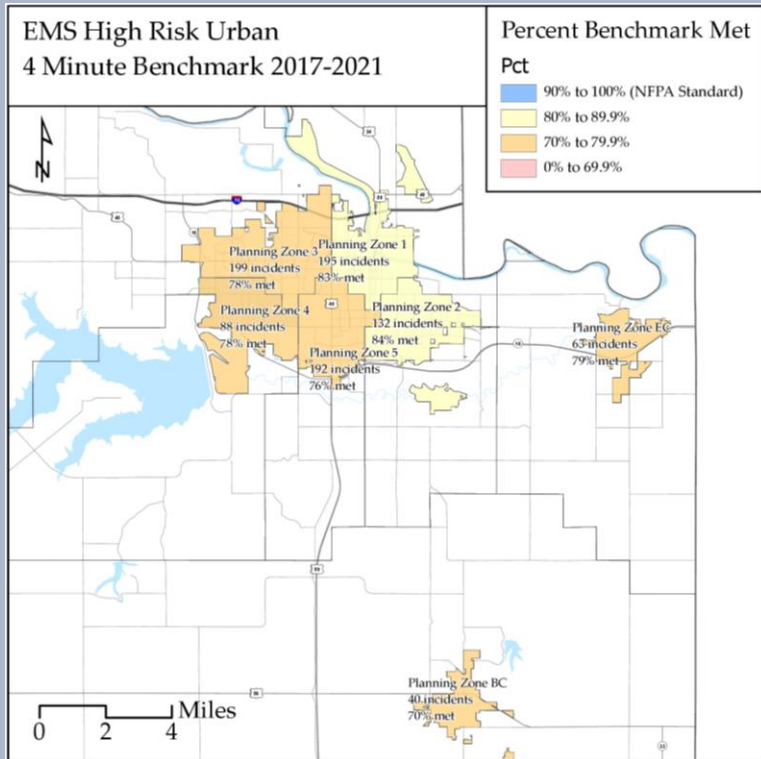
Medic Unit Move-Up By Year

Medic unit move-ups refer to a time when LDCFM's resources in high risk areas are extremely low. A move-up consists of bringing an out-of-town resource (medic unit) into a high risk area to increase emergency response coverage capability.

Year	Move-Up Count
2020	166
2021	156
2022	165

Travel Time Performance – High Risk

LDCFM's emergency response performance, relative to adopted target travel times, can be seen in the three maps, below. High Risk incidents that are included in the maps may include events like Cardiac Arrests or Structure Fires.



Lawrence Four Minute Travel Time and Development

- Building Permit Records (2017-2021)
- LDCFM Station
- Service Time 4 Minute

