



Lawrence Virtual School Work Session

October 23, 2023

Lawrence Virtual School History

LVS was started in 2004 as a K-8 Charter School, serving 169 students. High school students were originally served by K-12, a private school vendor. During the 2014-2015 school year grades 9-12 instruction moved to USD 497. Over the years the LVS model has changed from a homeschool support program into a program that is both College Board and NCAA certified!



Kansas Requirements for Virtual Schools

- Enrollment and Funding
- Attendance and Truancy
- Courses, Credits and Assessment
- Communication with Students and Families
- Student Involvement and Support Services
- Professional Development
- Recruitment and Advertising
- School Improvement and Accreditation



Virtual School Funding

K.S.A. 72-3715 establishes how much funding school districts receive for virtual education

\$5,600 per full-time student

\$2,800 per 1 FTE (360 minutes per day) for part-time students

\$ 709 per credit hour - adult students and diploma completion



Attendance and Truancy

Virtual students under 18 are subject to the requirements of compulsory attendance (K.S.A. 72-1111) and truancy (K.S.A. 72-1113). Virtual schools and programs should modify these statutes to apply to a week of school, rather than a day of school and should include their own progress expectations.

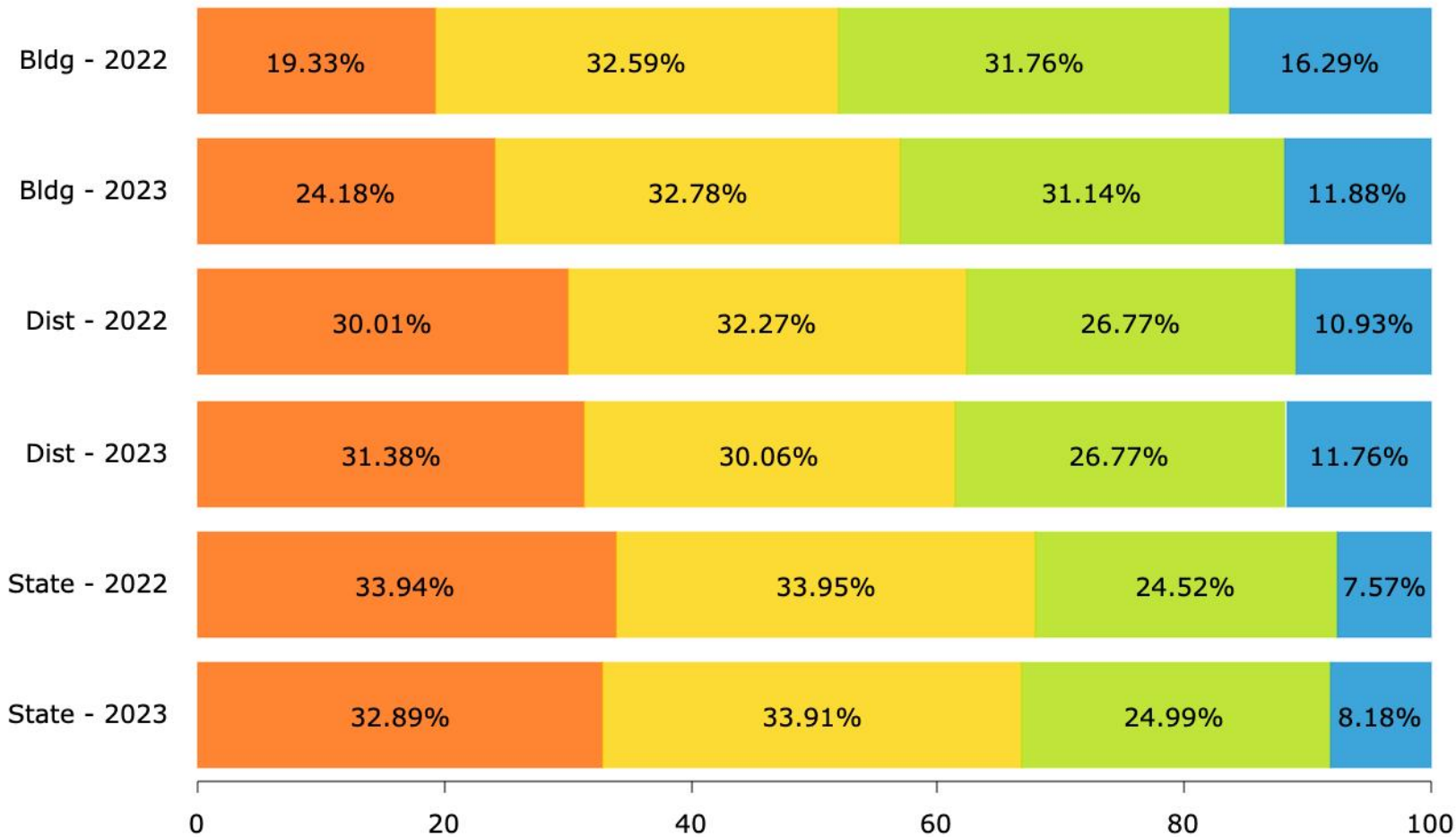


Courses, Credits and Assessments

- Local, State and National Standards
- Syllabus with assignment completion dates must be provided for each course
- Credit is awarded when goals/objectives and competency is met
- State assessments



State Assessments - ELA



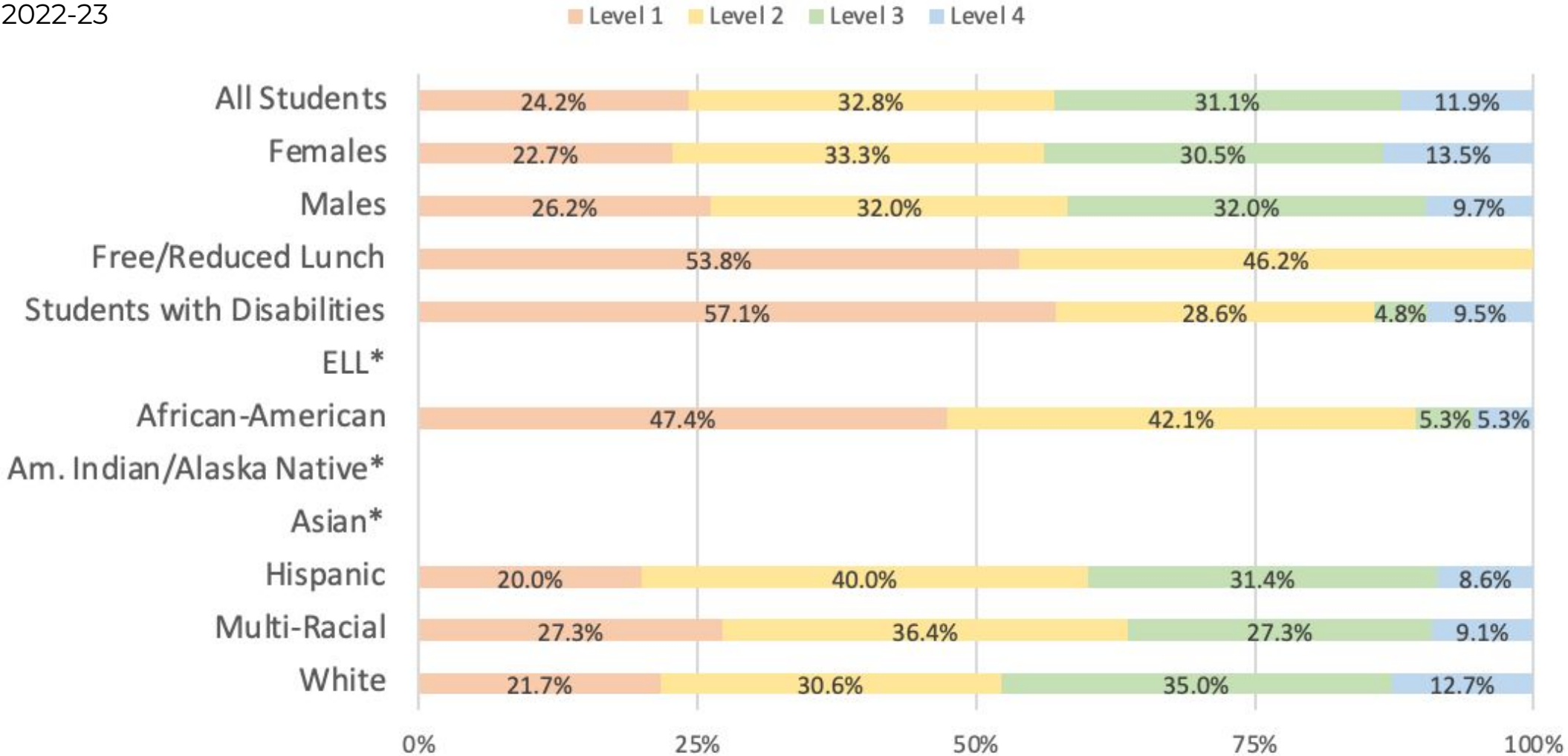
66.85%
of LVS Students in
Grades 3-8, 10
participated in the
2023 State
ELA Assessments

- Level 1
- Level 2
- Level 3
- Level 4



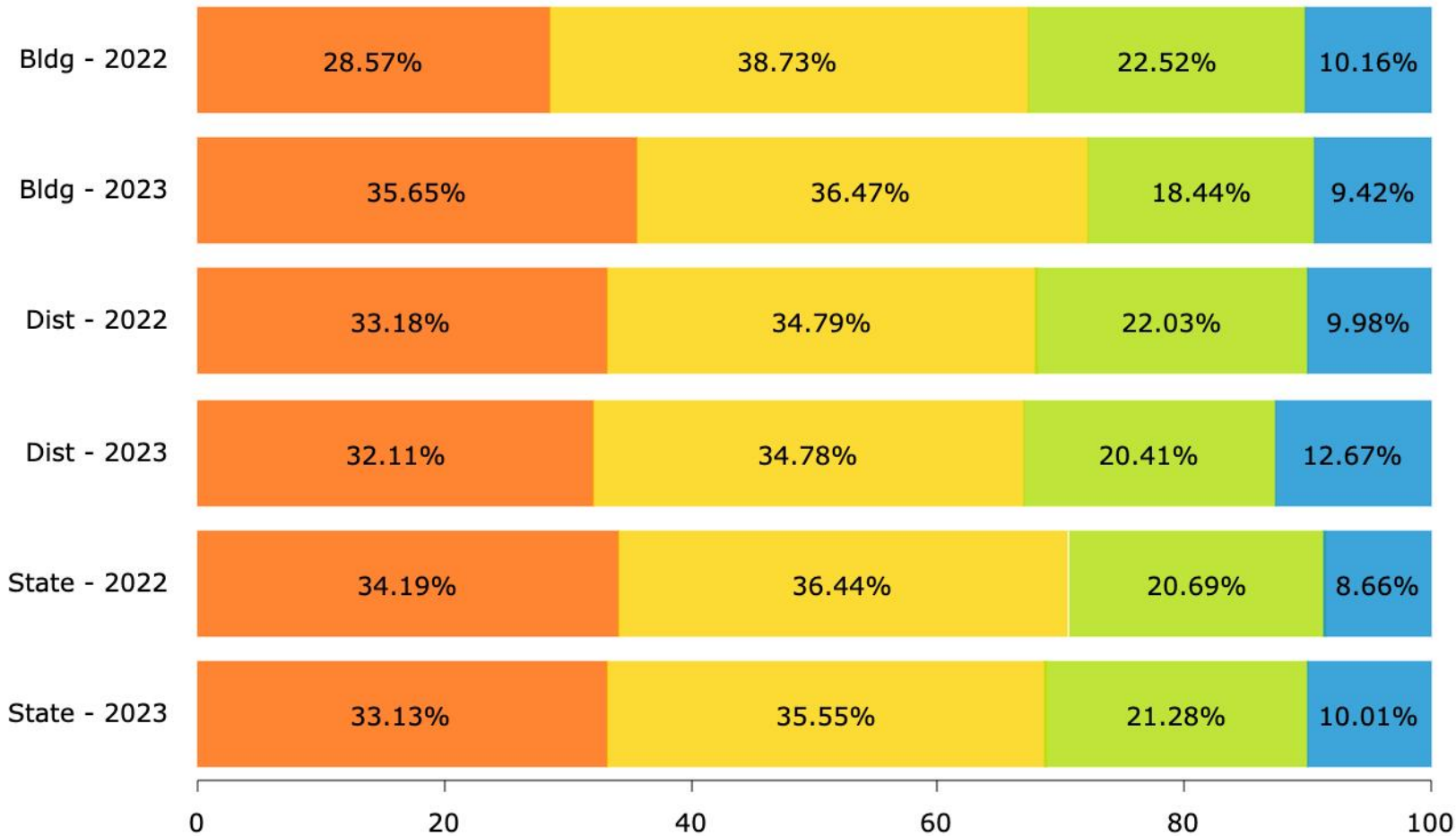
State Assessments - ELA

2022-23



*To protect student privacy, when a subgroup has fewer than 10 students the data is not displayed.

State Assessments - Math



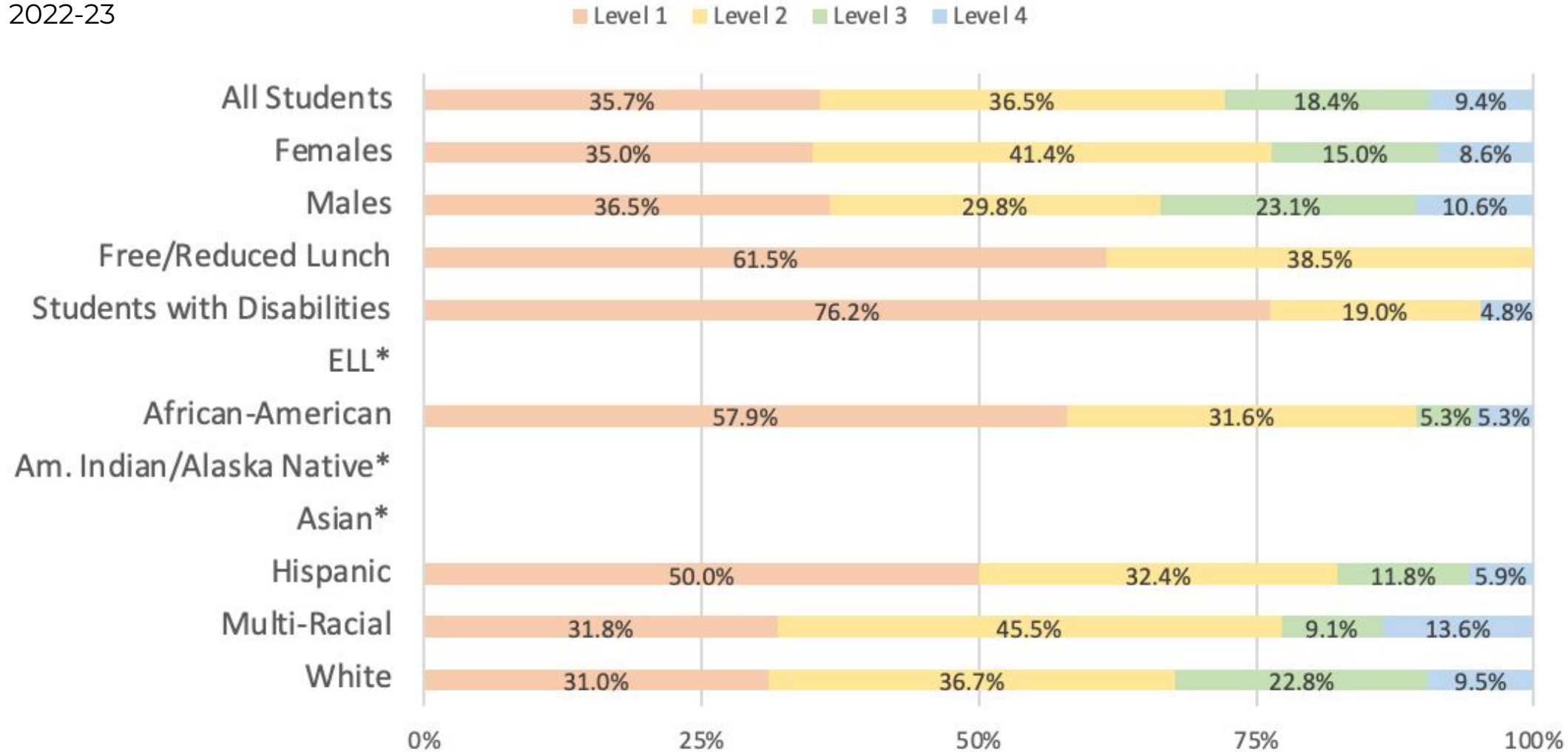
66.85%
of LVS Students in
Grades 3-8, 10
participated in the
2023 State
Math Assessments

- Level 1
- Level 2
- Level 3
- Level 4



State Assessments - Math

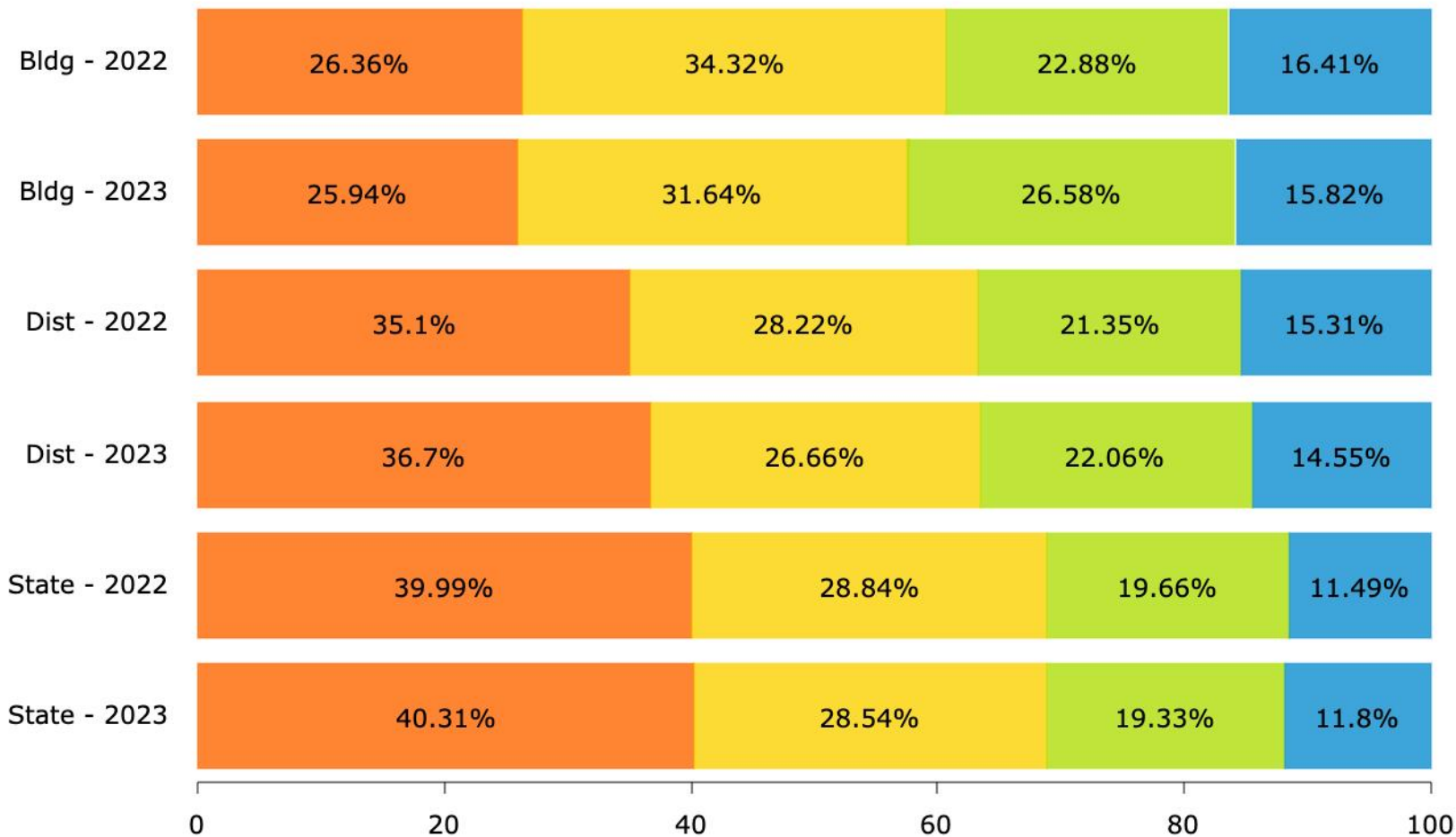
2022-23



*To protect student privacy, when a subgroup has fewer than 10 students the data is not displayed.

State Assessments - Science

73.83%
of LVS Students in
Grades 5, 8, and 11
participated in the
2023 State
Science Assessments

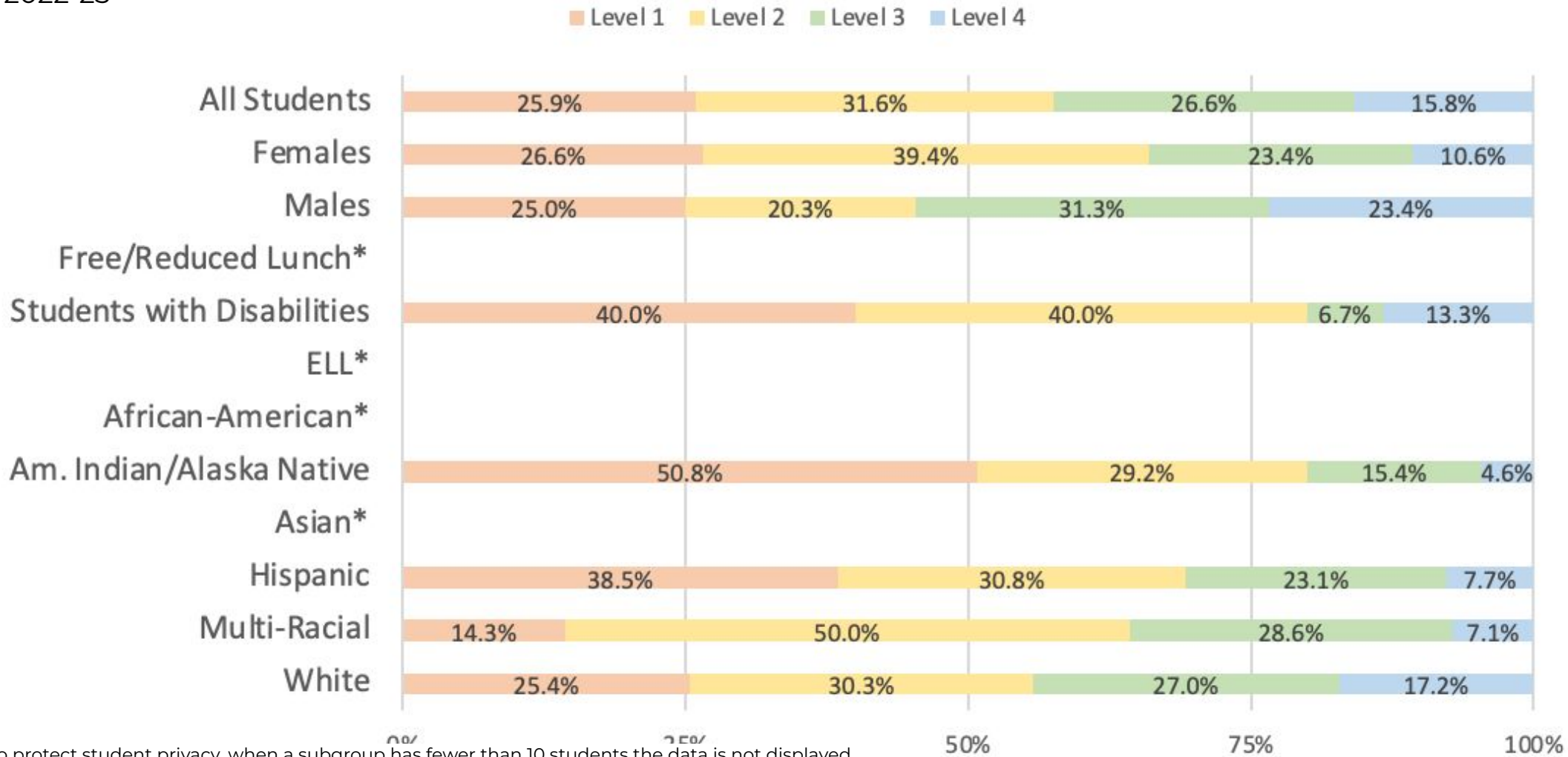


- Level 1
- Level 2
- Level 3
- Level 4



State Assessments - Science

2022-23



*To protect student privacy, when a subgroup has fewer than 10 students the data is not displayed.

Virtual School Models

- State-Run and Managed
- School District-Run and Managed
- Partnership with Other Districts
- Contract with Vendor or Service Center



Virtual School Models

Virtual School Teacher

Provides direct instruction to virtual students and/or grades content students in an online curriculum that provides specific assignments.

Virtual Course Monitors

Monitors virtual students in an online curriculum that provides the instruction and automatically grades assignments or provides rubric for monitors to grade assignments.



Example Teacher Schedule



	Monday	Tuesday	Wednesday	Thursday	Friday
8:00:00 AM-8:45AM	Live Course	Small Groups	Live Course	Small Groups	Team Meeting
9:40:00 AM-10:25 AM	Indv Conferences	Small Group	Indv Conferences	Small Group	Indv Conferences
10:30:00 AM-11:15 AM	Live Course	Indv Conferences	Live Course	Indv Conferences	Club Time
11:20 AM	LUNCH	LUNCH	LUNCH	LUNCH	Lunch
11:50:00 AM-12:35 PM	Live Course	Indv Conferences	Live Course	Indv Conferences	Indv Conferences
12:40:00 PM-1:25 PM	Indv Conferences	Indv Conferences	Indv Conferences	Indv Conferences	Club Time
1:30:00 PM-2:15 PM	Live Course	Live Course	Plan	Live Course	Small Group
2:20:00 PM-3:00 PM	Plan	Plan	PLC	Plan	Plan
3:00-3:30 PM	Office Hours	Office Hours	PLC	Office Hours	Office Hours

Elementary Curriculum Resources

Math

- Zearn
- Math Expression
- iXL for Math

ELA

- Benchmark Advance
- iXL for ELA
- RAZ

Social Studies

- (IDM) Inquiry Design

Science

- Mystery Science



Secondary Curriculum Resources

Math

- Flexpoint
- IXL

Social Studies

- Flexpoint

ELA

- Flexpoint

Science

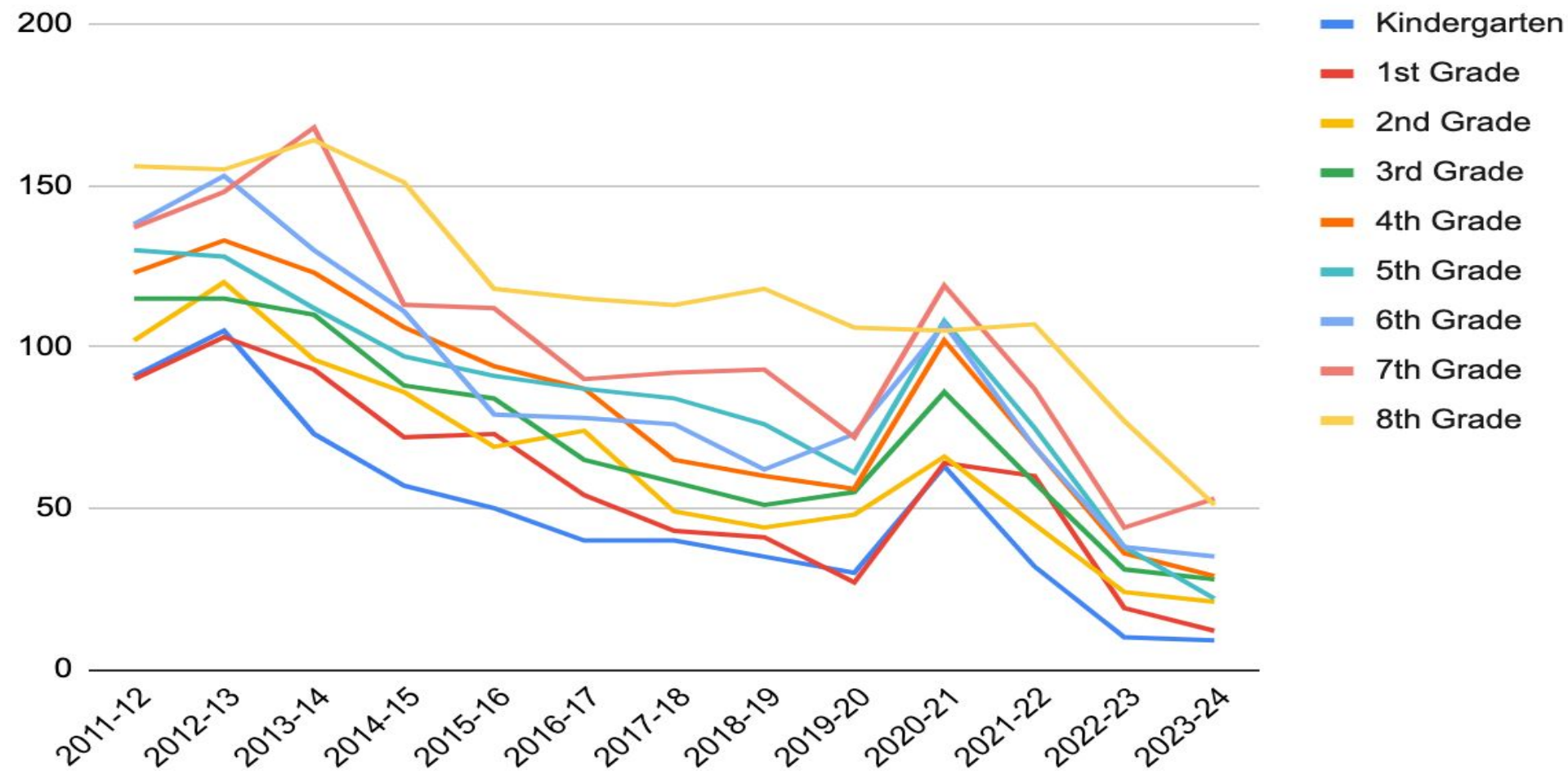
- Flexpoint

Electives

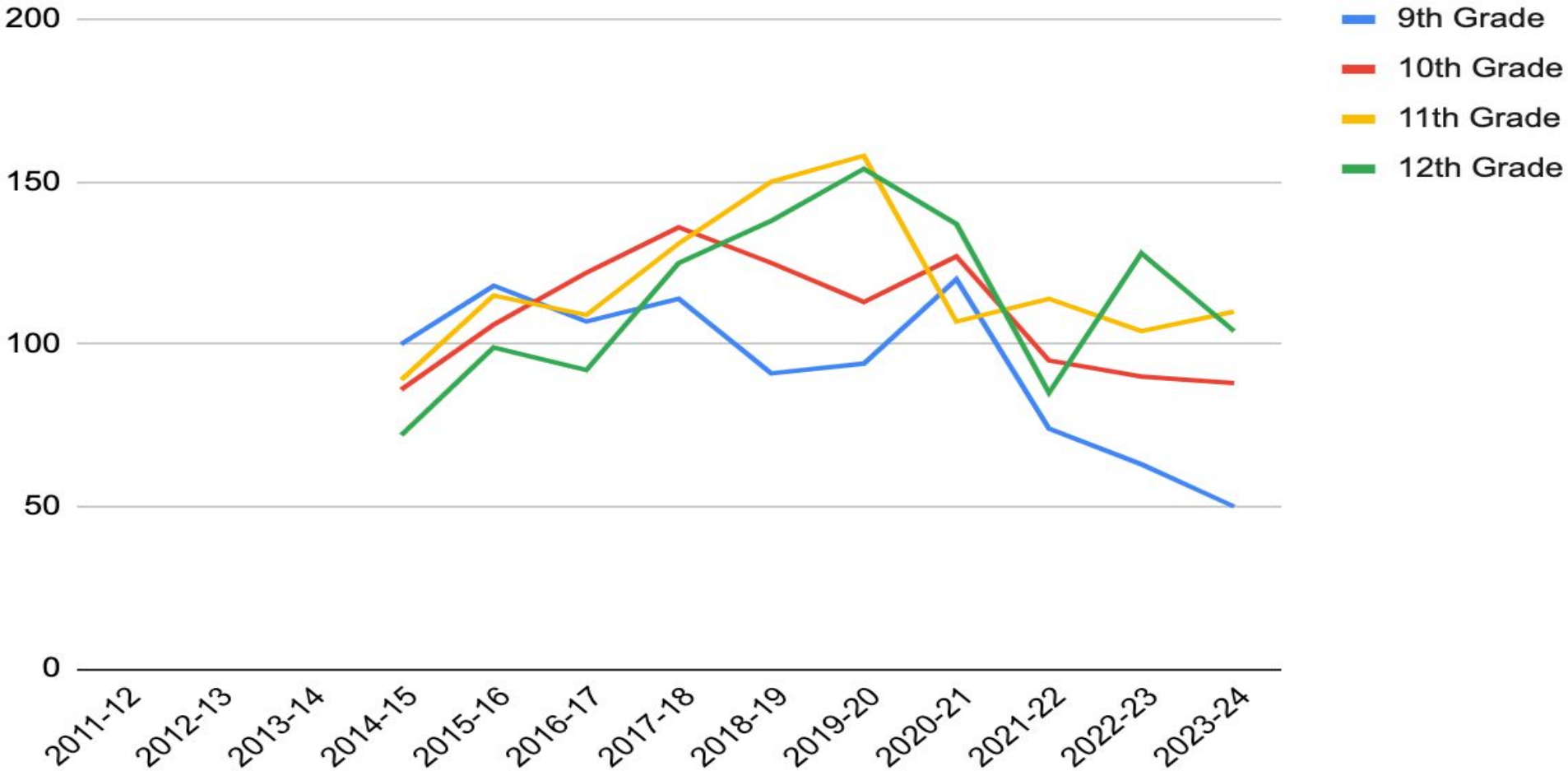
- eDynamic



K-8 Enrollment LVS 2011-2023

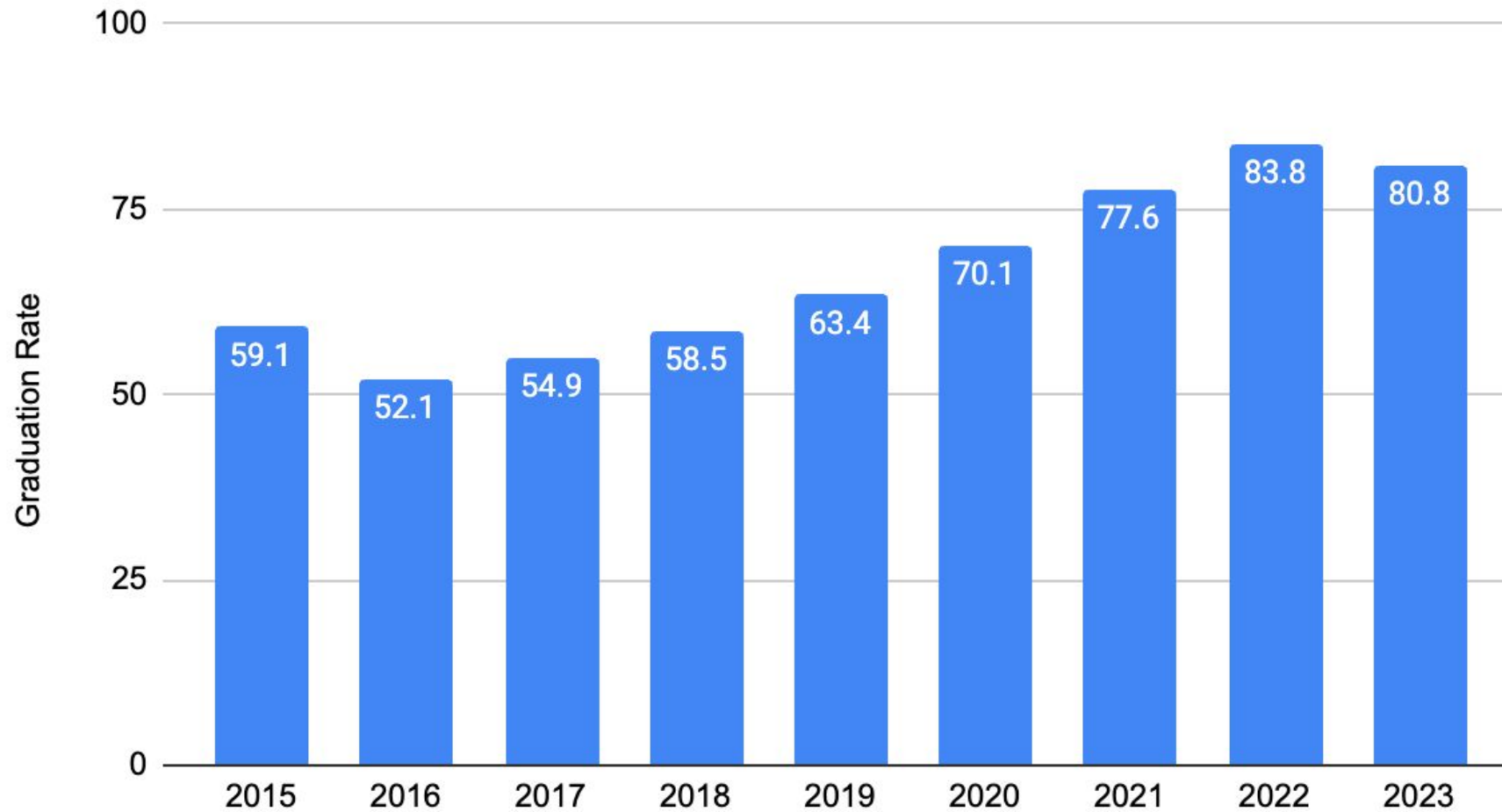


9-12 Enrollment LVS 2014-2023

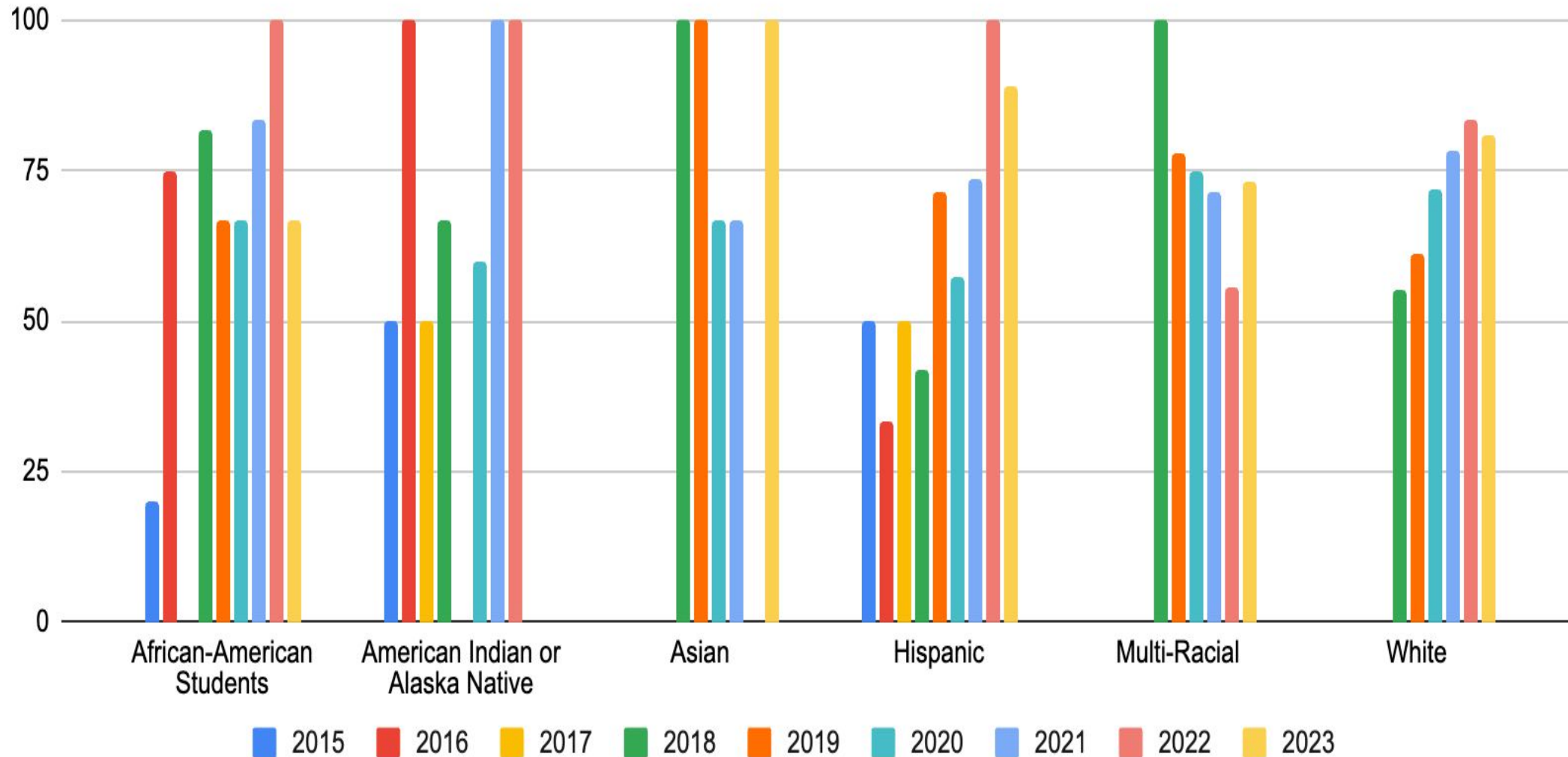


Graduation %

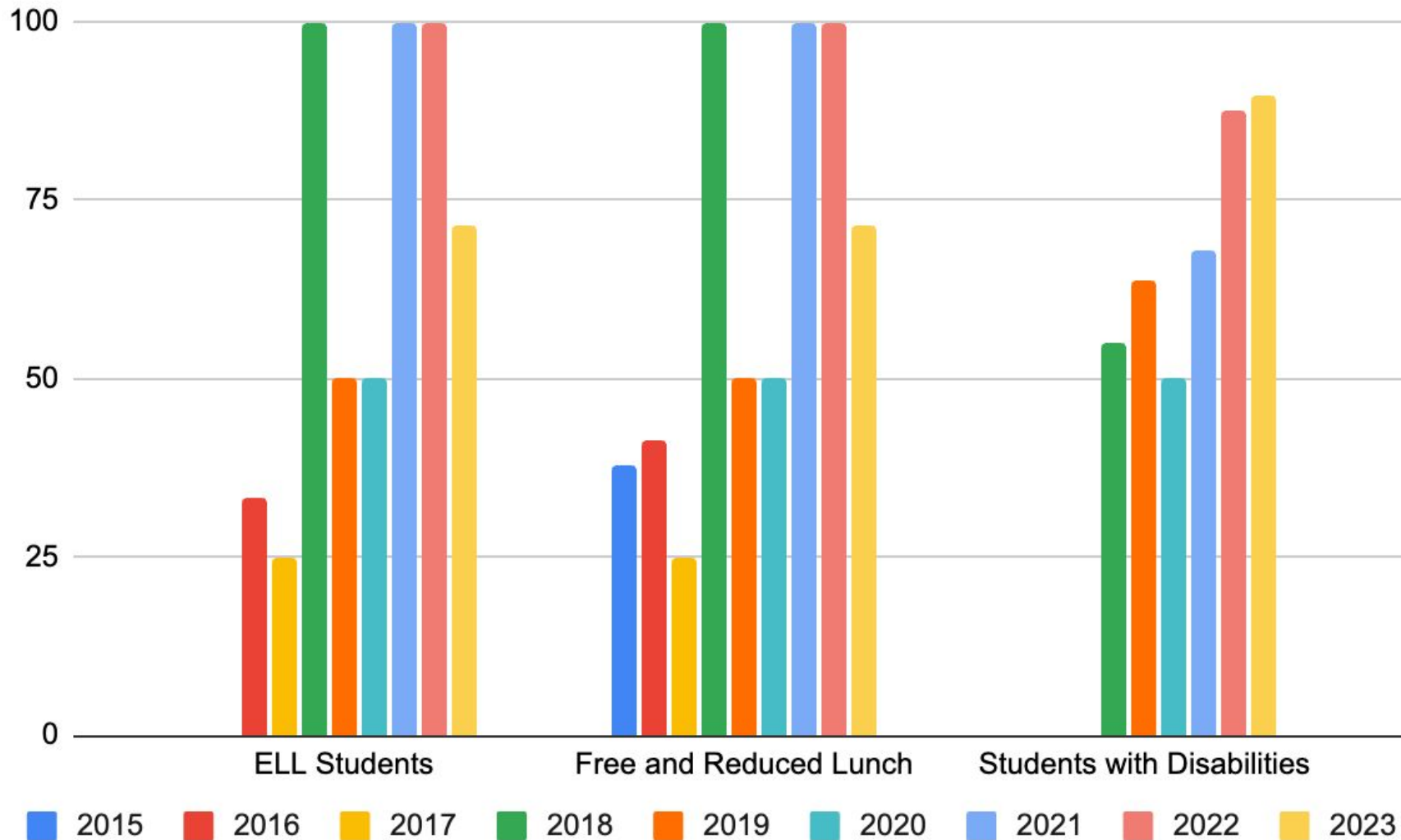
All Students - 4 Year Cohort %



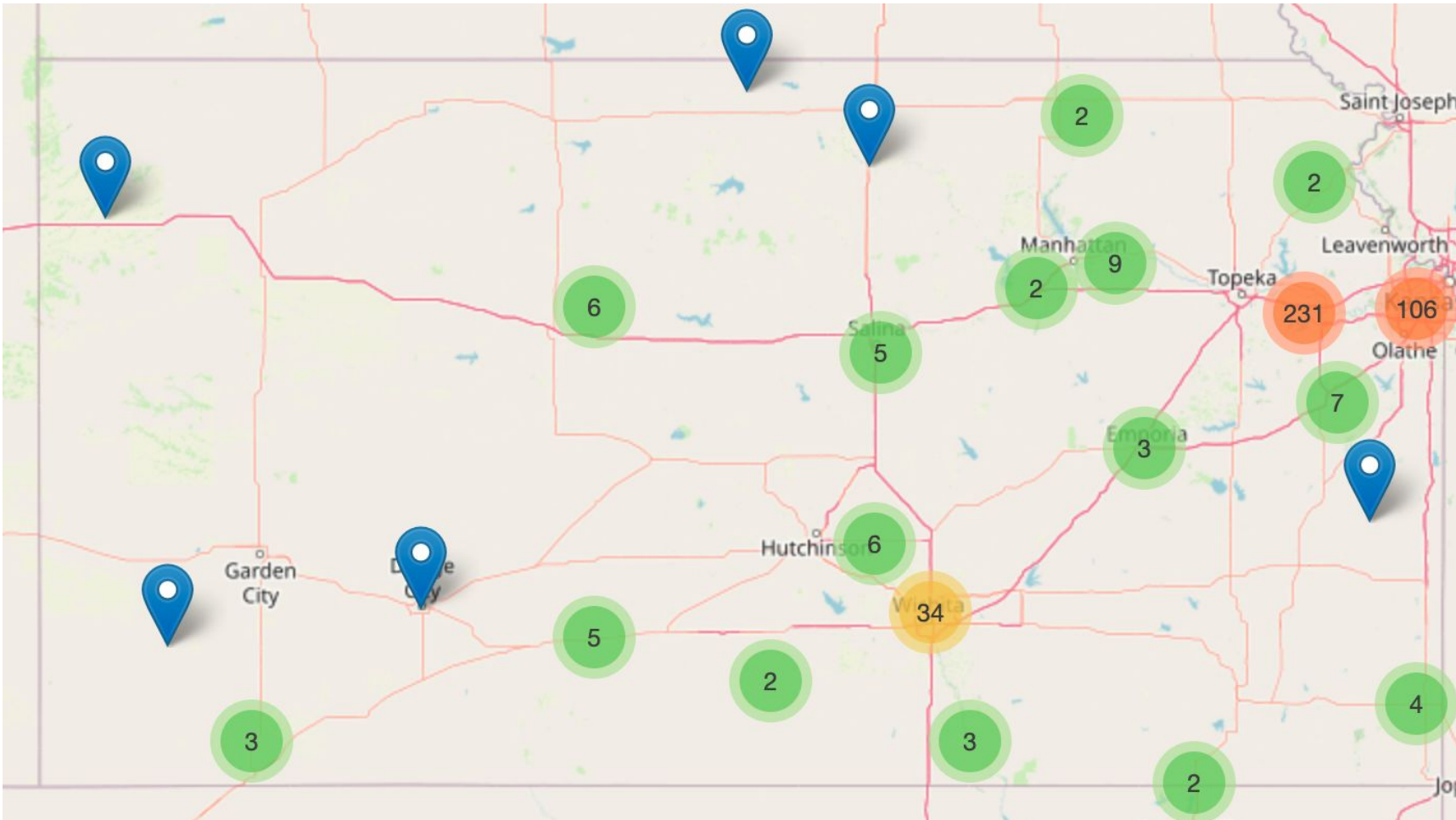
Graduation - by Race/Ethnicity



Graduation - by Program



Where are our students located?



= 1 LVS student enrolled from this location



Moving Forward

Challenges

Professional
Development

Special Education

Staffing Ratio

Opportunities

Who is the “right fit” for
LVS

Part-Time/Brick and
Mortar

Physical Space





Questions and Discussion